



AQUAFIGHTER

AquaFighter® : Purify and Protect
keeps diesel fuel and tanks **water-free**



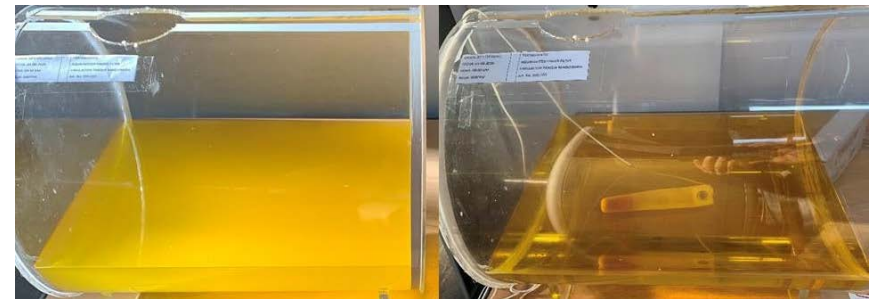
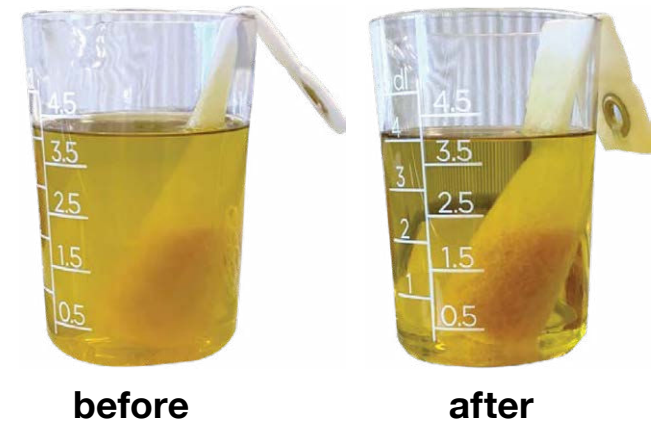
ConidiaBioscience

www.aquafighter.com
www.conidia.com



A true revolution in fuel quality management and fuel tank maintenance

- Long-term & short-term savings on maintenance and capital equipment
- Demulsifies diesel & biodiesel blends by maintaining water level within fuel specification in the tank at all times
- Protects fuel tank from microbial growth, corrosion and other related damages due to water accumulation
- Non-toxic, safe to handle and safe for the environment
- Stops the domino-effect of water damage from the tank through the fuel system to the engine
- Manages fuel-quality and fuel tank condition better than other solutions combined



Water is the enemy of stored fuel

Aquafighter will protect your fuel and tank from excess water that is generated over time.

Presence of water in a diesel tank is inevitable. This is an everyday battle, independent of tank size and where ever you are in the world. Free and entrained water is generated in your tank through air condensation, fuel supply, ineffective filtration and improper system design. It can also come through leaks, accidents and thievery. When water is allowed to accumulate in your tank, significant damage including tank corrosion can occur.

How does **Aquafighter**[®] work in the fuel tank?

Aquafighter is effective in reducing and removing water inside the fuel tank. This is accomplished through 3 indispensable actions that are necessary to achieve the desired fuel purity and consequently provide tank protection.

- **Demulsifies** water by physico-chemical adsorption of water molecules to less than 65ppm total fuel water content with maximum efficiency. (Aquafighter causes water to release naturally from fuel and it achieves this without adding to or altering the fuel, unlike certain fuel additives would do. After market additives can cause corrosion themselves)
- **Attracts & Captures** water immediately upon release from the fuel molecules
- **Isolates** water in its protective gel to permanently segregate it from the fuel & tank environment so your fuel & tank is protected at all times. (Aquafighter will encapsulate the water preventing corrosion, microbial growth & re-emulsification until it is removed from the tank)

Note: With biodiesel, fuel becomes significantly more hygroscopic, which means it attracts water. Thus, the fuel becomes emulsified with water rather than to allow the water to separate to the tank bottom.

Aquafighter® tank opening & product fit guide



Tank Capacity	0-100 L	100-500 L	500-1000 L	1000-1500 L	1500-2000 L	2000-5000 L	5000-10000 L	10000-15000 L	15000-20000 L	20000-30000 L	30000+ L
Tank Opening	0-25 US gal	25-125 US gal	125-250 US gal	250-400 US gal	400-525 US gal	525-1250 gal	1250-2500 gal	2500-4000 gal	4000-5250 gal	5250-8000 gal	8000+ gal
38-90mm 1.5-3.5"	Finger (12 months)	Snake (12 months)	Snake (6 months) Twin Snake (12 months)	Snake (4 months) Twin Snake (8 months) Triple Snake (12 months)	Snake (3 months) Twin Snake (6 months) Triple Snake (9 months) Quad Snake (12 months)						
90-150mm 3.5-6"			Anaconda (24 months)			Anaconda (12 months)	Anaconda (6 months) Twin Anaconda (12 months)	Anaconda (4.5 months) Twin Anaconda (9 months)	Anaconda (3 months) Twin Anaconda (6 months)		
150-300mm 6-12"			Medium Canvas (12 months) Large Canvas (24 months)			Medium Canvas (6 months) Large Canvas (12 months)	Large Canvas (6 months)	Large Canvas (4.5 months)	Large Canvas (3 months)		
300-600mm 12-24"			Large Canvas (24 months)			Large Canvas (12 months)	Large Canvas (6 months)	Large Canvas (4.5 months)	Large Canvas (3 months)	Fuel Station Mat (12 months)	2+ Fuel Station Mats (12 months)
600mm+ 24"+									Fuel Station Mat (24 months)		
									Depot		

- Check the opening size of the tank first, and then the capacity of the tank. Choose an Aquafighter that suits your maintenance schedules.
- The period shown is the maximum time that the Aquafighter should be left in place between changes.
- Ensure you check periodically that the Aquafighter has not become saturated, particularly after first time use.
- Avoid leaving in place when fuel tank is in motion, particularly where the Aquafighter might block the fuel intake.
- These are estimates and needs could differ based on fuel quality, tank conditions and fuel quantity.

Aquafighter[®] removes and captures emulsified water from fuel as well as free water from the bottom of the fuel tank

Installation Instructions:

- Remove Aquafighter from the sealed bag and disperse the powder evenly throughout each chamber of the fabric pouch
- Insert Aquafighter into the bottom of your fuel tank away from the fuel intake
- Tie off the Aquafighter under the fuel cap or outside of the fuel cap leaving only enough slack to lay the Aquafighter flat on the bottom of the fuel tank
- Check the Aquafighter periodically for water content and replace when at or close to capacity. (Aquafighter is designed for each chamber to fill exactly half-way for easy removal)
- Dispose of Aquafighter in the proper waste receptacle required by local law
- Immediately replace Aquafighter in the tank to keep fuel pure and remain protected from water at all times
- Do not install Aquafighter into an opening smaller than the specified size of the particular Aquafighter product





Aquafighter 999.020

Finger

Length: **200mm (8")** Width: **40mm (1.5")**

Capacity: **200ml (7 fl oz)**

Dry Weight: **70g (2.5 oz)**

Dry Weight w/ Packaging: **150g (5.3 oz)**

Designed for small machines and tanks under 100 L (25 US gal) with openings between 38-90mm (1.5-3.5")

Requires opening of at least 38mm (1.5")



Aquafighter 999.026

Snake

Length: **500mm (20")** Width: **40mm (1.5")**

Capacity: **500ml (17 fl oz)**

Dry Weight: **190g (6.7 oz)**

Dry Weight w/ Packaging: **260g (9 oz)**

Designed for machines, boats and tanks with openings between 38-90mm (1.5-3.5") and under 500 L (125 US gal). For larger tanks, the Snake can be used but with more frequent replacement. This is the most popular Aquafighter for tanks with smaller openings

Requires opening of at least 38mm (1.5")

AquaFighter 999.027-1

Twin Snake

Length: **1000mm (39")** Width: **40mm (1.5")**

Capacity: **1 L (34 fl oz)**

Dry Weight: **255g (9 oz)**

Dry Weight w/ Packaging: **340g (12 oz)**

Designed for machines and tanks with openings between 38-90mm (1.5-3.5") that are between 500-1000 L (125-250 US gal)

Requires opening of at least 38mm (1.5")

Aquafighter 999.027-2

Triple Snake

Length: **1500mm (59")** Width: **40mm (1.5")**

Capacity: **1.5 L (50 fl oz)**

Dry Weight: **310g (11 oz)**

Dry Weight w/ Packaging: **390g (13.8 oz)**

Designed for storage tanks with openings between 38-90mm (1.5-3.5") that are between 800-1200 L (210-320 US gal)

Requires opening of at least 38mm (1.5")



The image shows a long, flexible, white, corrugated tube with a rope handle at each end, forming a large loop. The tube has a textured, ribbed appearance. The background is split into a dark grey left half and a white right half.

Aquafighter 999.027-3

Quad Snake

Length: **2000mm (79")** Width: **40mm (1.5")**

Capacity: **2 L (68 fl oz)**

Dry Weight: **360g (12.7 oz)**

Dry Weight w/ Packaging: **440g (15.5 oz)**

Designed for storage tanks with openings between 38-90mm (1.5-3.5") that are between 1000-1500 L (250-400 US gal)

Requires opening of at least 38mm (1.5")



Aquafighter 999.028

Anaconda

Length: **1500mm (59")** Width: **90mm (3.5")**

Capacity: **4 L (135 fl oz)**

Dry Weight: **510g (18 oz)**

Dry Weight w/ Packaging: **630g (22.2 oz)**

Designed for machines and tanks with openings of at least 90mm (3.5")

Requires opening of at least 90mm (3.5")



AquaFighter 999.040

Twin Anaconda

Length: **3000mm (118")**

Width: **90mm (3.5")**

Capacity: **8 L (270 fl oz)**

Dry Weight: **650g (23 oz)**

Dry Weight w/ Packaging: **775g
(27.3 oz)**

Designed for fuel stations and
other large tanks with openings
of at least 90mm (3.5")

Requires opening of at least
90mm (3.5")

Aquafighter 999.021

Medium Canvas

Length: **350mm (14")** Width: **270mm (11")**

Capacity: **2.5 L (85 fl oz)**

Dry Weight: **450g (16 oz)**

Dry Weight w/ Packaging: **575g (20.3 oz)**

Designed for storage tanks with access of at least 120mm (4.75") that are between 500-5000 L (125-1250 US gal)

Requires opening of at least 120mm (4.75")





AquaFighter 999.022

Large Canvas

Length: **700mm (28")** Width: **270mm (11")**

Capacity: **4 L (135 fl oz)**

Dry Weight: **960g (34 oz)**

Dry Weight w/ Packaging: **1090g (38.4 oz)**

Designed for storage tanks with access of at least 150mm (6") that are between 5000-10000 L (1250-2500 US gal). Multiple filters and more frequent replacement can be used for larger tanks

Requires opening of at least 150mm (6")



Aquafighter 999.042

Fuel Station Mat

Length: **2000mm (79")** Width: **1000mm (39")**

Capacity: **40 L (10.5 US gal)**

Dry Weight: **2800g (99 oz)**

Dry Weight w/ Packaging: **3200g (113 oz)**

Designed for fuel stations and other large tanks with manhole access of at least 300mm (12") and capacity of more than 15000 L (4000 US gal). Multiple filters and more frequent replacement can be used for larger tanks

Requires opening of at least 300mm (12")

Aquafighter 999.030

Depot

Length: **8000mm (315")**

Width: **500mm (20")**

Capacity: **60 L (15 US gal)**

Dry Weight: **TBD**

Dry Weight w/ Packaging:
11110g (392 oz)

Designed for depot and terminal tanks that are at least 9 M (30') high with manhole access of at least 300mm (12"). The Aquafighter Depot is designed to hang above the "free water" level to remove bound water only. Multiple filters and more frequent replacement can be used for even larger tanks

Requires opening of at least 90mm (3.5")

Aquafighter 999.023

Refillable Dipstick Indicator

Length: **200mm (8")** Width: **40mm (1.5")**

Capacity: **100ml (3.5 fl oz)**

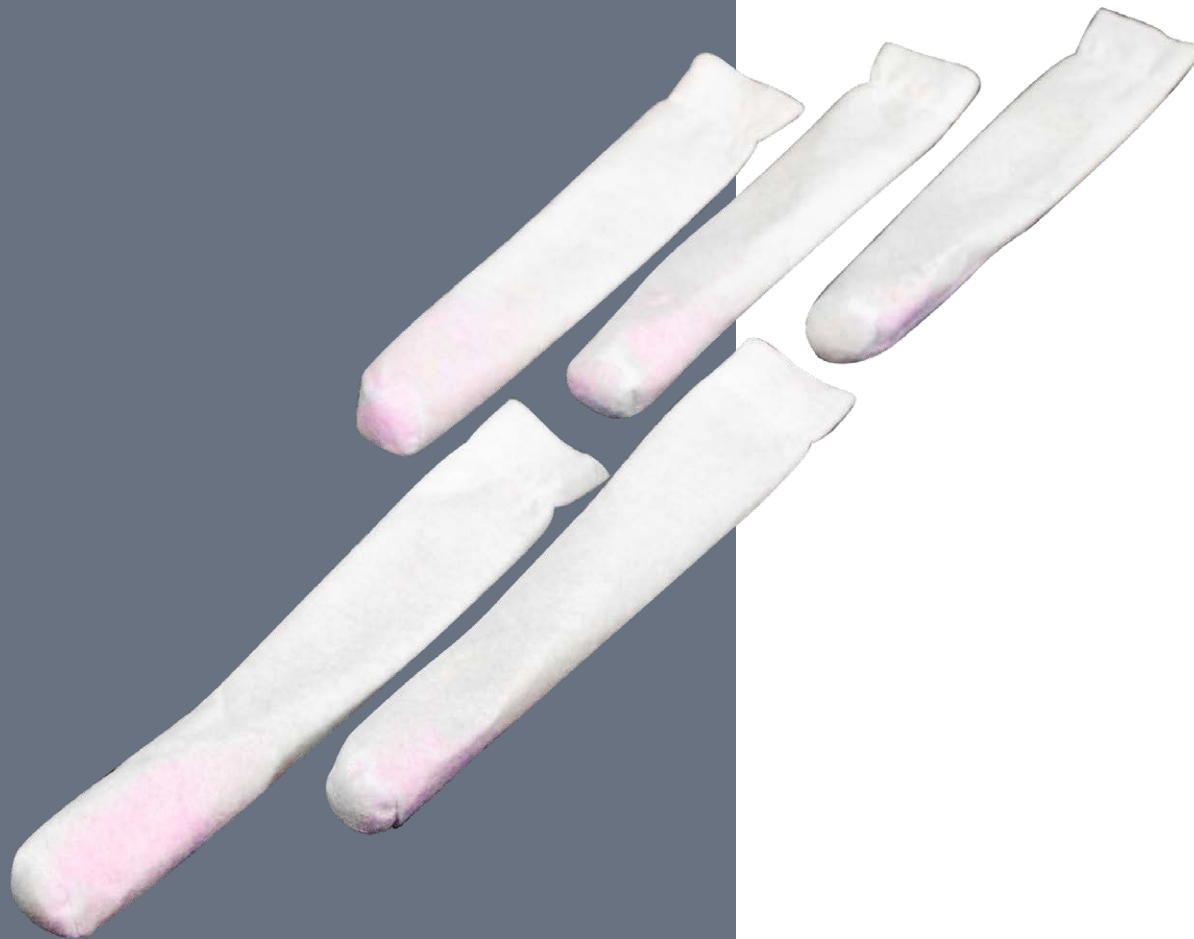
Dry Weight: **135g (4.75 oz)**

Dry Weight w/ Packaging: **150g (5.3 oz)**

Designed as bound water indicator for fuel tanks with a dipstick pipe

Requires opening of at least 44mm (1.75")





Aquafighter 999.024
(5 pieces)

Dipstick Indicator Refill

Length: **200mm (8")** Width: **40mm (1.5")**

Capacity: **100ml (3.5 fl oz)**

Dry Weight: **150g (4.75 oz)**

Replacement filter for Dipstick Indicator
and also can be used as a much more
effective replacement for tank paste.
(5 pieces)

FUELSTAT[®]

FUELSTAT[®] Diesel Fuel Test Kit

Single boxed test kit: **MD-011B**

Box of 8 test kits: **FMD8**

Microbial contamination test kit for Diesel and Middle Distillate fuels

- The ultra-simple test that just requires 4 drops of sample
- 15 minutes to result as opposed to 4-7 days!
- 'Test at the tank' technology - no laboratory required
- No requirement for additional equipment or sterility measures

Single boxed test kit



Box of 8 test kits



Aquafighter[®] and **FUELSTAT**[®] are exclusively available from Conidia Bioscience and are distributed globally through a network of distributor partners

HEADQUARTERS & GLOBAL SALES OFFICE

Conidia Bioscience Ltd
Bakeham Lane, Egham,
Surrey, TW20 9TY, UK
+44 (0)1491 829102
info@conidia.com

US SALES OFFICE

Conidia Bioscience Inc
15 Briarwood Ln, Dover,
NH, 03820, USA
+1 844 438 3578
info@conidia.com

www.aquafighter.com

www.conidia.com